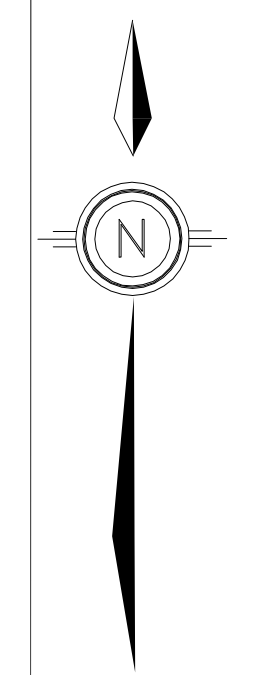
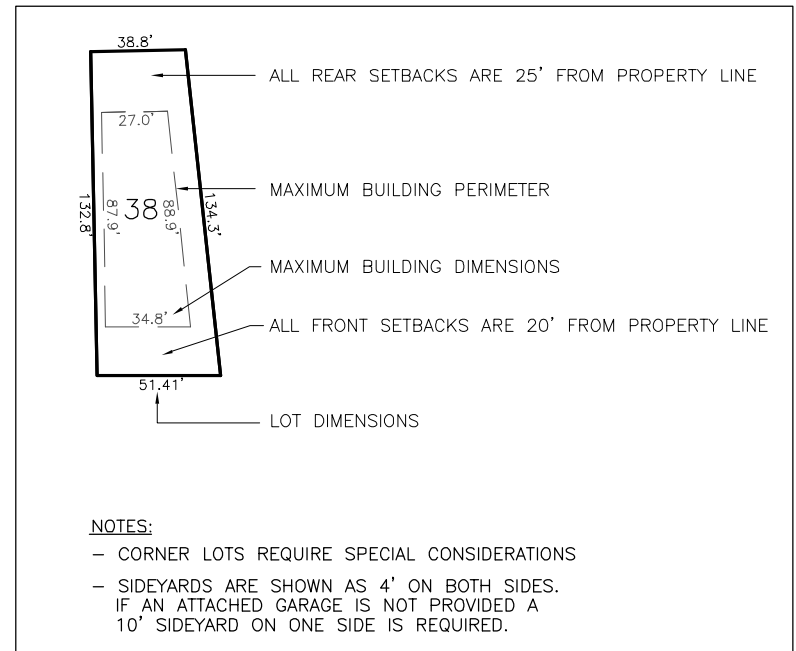


SUGGESTED HOUSE WIDTH	(49)	SERVICE WATER VALVE	•
GARAGE LOCATION	(G)	STREET LIGHT	○
WALKOUT BASEMENT	(W/O)	POWER PEDESTAL	△
BACK TO FRONT LOT DRAINAGE	(B/F)	POWER TRANSFORMER	□
SPLIT LOT DRAINAGE	(S)	TELUS VAULT	⊠
TREE	●	SUPER MAILBOX	■
MAN HOLE	○	STREET SIGN	+
HYDRANT	⊕	UTILITY LOT BARRIER	⊠
MAIN WATER VALVE	○	CONSTRUCT TO CITY OF GP STANDARD	⊠
		PARAPLEGIC RAMP	⊠



REVISION	BY	APPD.	DATE

ENGINEERS STAMP	PERMIT STAMP	APPROVAL STAMP

DESIGN:	DSB
DRAWN:	GWA
CHECKED:	DSB
DATE:	JANUARY 4/11
BENCHMARK:	
SCALE:	1"=50'



The FOCUS Corporation Ltd.
10127 - 120 Avenue
Grande Prairie, AB, Canada T8V 8H8
Main: 780.539.3222
Fax: 780.539.3343
www.focus.ca

CLIENT:	CITY OF GRANDE PRAIRIE
PROJECT:	SIGNATURE LAND CORP. SIGNATURE FALLS RESIDENTIAL SUBDIVISION - PHASE 4A GRANDE PRAIRIE, ALBERTA

FILE No.	020200518
FOCUS FILE No.	020200518-DD
DRAWING No.	1 OF 1
SHEET	1 OF 1
LAYOUT No.	MARKETING
REV.	0

I:\Users\GWA\Documents\200518\Signature Falls Ph. 4A\City\020200518-DD.dwg, 04/11/2011 4:39pm